

Air Traffic Controller (ATC)

RADIO NETWORK CONTROLLER

THE UTSTARCOM AIR TRAFFIC CONTROLLER (ATC) PROVIDES COST-EFFECTIVE AND SEAMLESS WIRELESS ROAMING IN A PERSONAL ACCESS SYSTEM (PAS) NETWORK



- **ROBUST SOLUTION OFFERING HIGH CAPACITY**
- **PROVIDES ROAMING**
- **CAPABILITIES FOR SUBSCRIBERS**
- **ENABLES COST EFFECTIVE MOBILE SERVICES**
- **PROVIDES A CENTRALIZED SUBSCRIBER DATABASE**

The UTStarcom ATC allows operators to offer roaming capabilities to subscribers, giving them the freedom to communicate throughout wide urban and suburban areas. This essential component of the UTStarcom Personal Access System (PAS) communicates with multiple UTStarcom Wireless Remote Terminals (WRTs), routing incoming and outgoing calls from the subscriber's home network to service areas while subscribers roam. With PAS, service providers can easily and cost-affordably deliver fixed line wireless local loop access and city-wide mobile services without deploying costly copper lines or cellular infrastructure, or adding expensive local exchange ports.

POWERFUL PLATFORM

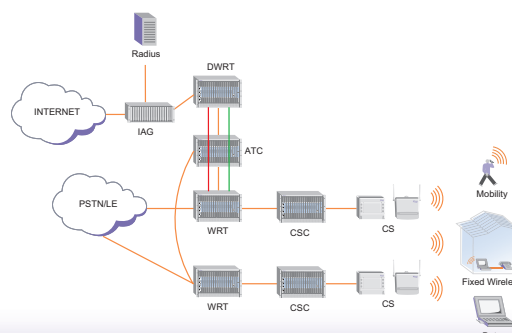
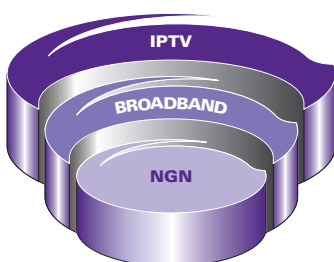
The ATC is a powerful hardware and software solution, utilizing UTStarcom's proven AN-2000™ Access Network System and a Sun Netra Solaris-based server. 1:1 redundancy is provided for the ATC in UTStarcom's PAS solution. In the PAS network, the ATC hardware platform switches calls, relaying signals to and from WRTs. Server-based ATC (SATC) contains the local and global subscriber database and determines the locations of subscribers as they roam between WRTs and outside the PAS network.

HIGH CAPACITY

The ATC offers an ideal solution for service providers seeking to serve a large and growing subscriber base. Each basic ATC supports up to 1,680 simultaneous calls. An ATC can setup calls at a rate of approximately 150 calls per second, supporting approximately 15,000 subscribers at a 50% roaming ratio. Each SATC can support up to 1 million users.

SCALABLE SOLUTION

Additional ATCs can be deployed in the network to support an increasing amount of roaming traffic. ATCs can be connected using either a meshed topology or a Hierarchical ATC (H-ATC) topology.



Technical Specifications



DIGITAL INTERFACE TO WRT

Interface	E1/T1
Signaling	Q.931
Impedance	75 Ω /120 Ω (E1), 100 Ω (T1) balance
Interface number	112

PHYSICAL

Dimensions	310mm H x 483mm W x 414mm D
Weight	20 Kg
Module size	245mm H x 22.5 mm W x 293 mm D
Standard cabinets:	
- Indoor ATC	2,200 mm H x 600 mm W x 700 mm D (6 shelves max.)
Rack mounting	19 in (standard), 23 in (with adapter)

POWER SUPPLY

Consumption	70W
TE1M	5W
PSM	6.5W
TCM	16W
Shelf backplane	5W
Battery backup	8 to 12 hrs
Operating voltage	-42 VDC to -56 VDC

ENVIRONMENTAL

Operating temperature	0°to 55°C
Relative humidity	95% noncondensing
Altitude	0 to 3,300 m
MTBF T1M:	16,500 hrs
TCM:	14,000 hrs
PSM:	7,500 hrs

SATC SPECIFICATIONS

HARDWARE

Processor	Dual 440 MHz Ultra Sparc-III
Memory	512 MB
Hard disk	9.1 GB
Communications	FDDI 100Base TX

POWER SUPPLY

Consumption	350W
Battery backup	8 to 12 hrs
Operating voltage	-48 VDC to -60 VDC

PHYSICAL

Dimensions	177 mm H x 435 mm W x 496 mm D
Weight	24 Kg
Rack mounting	19 in (standard) 23 in (with adapter)

ENVIRONMENTAL

Operating temperature	5°to 40°C
Relative humidity	5 to 85% noncondensing
Altitude	-300 to 3,000 m
MTBF	Five years (system)

Please note the information contained herein is for informational purposes only. Technical claims listed depend on a series of technical assumptions. Your experience with these products may differ if you operate the products in an environment, which is different from the technical assumptions. UTStarcom reserves the right to modify these specifications without prior notice. UTStarcom makes no warranties, express or implied, on the information contained in this document.

UTStarcom, Inc. USA
1275 Harbor Bay Parkway
Alameda, CA 94502 USA
Tel: 510-864-8800
Fax: 510-864-8802

www.utstar.com

About UTStarcom, Inc.

UTStarcom is a global leader in IP-based, end-to-end networking solutions and international service and support. The company sells its broadband, wireless, and handset solutions to operators in both emerging and established telecommunications markets around the world. UTStarcom enables its customers to rapidly deploy revenue-generating access services using their existing infrastructure, while providing a migration path to cost-efficient, end-to-end IP networks. Founded in 1991 and headquartered in Alameda, California, the company has research and design operations in the United States, China, Korea and India. UTStarcom is a FORTUNE 1000 company. For more information about UTStarcom, visit the company's Web site at www.utstar.com

Copyright © 2008 UTStarcom, Inc. All Rights Reserved. UTStarcom and the UTStarcom logo are registered trademarks, and the AN-2000, and A World of Better Communication are trademarks of UTStarcom, Inc. and its subsidiaries.