

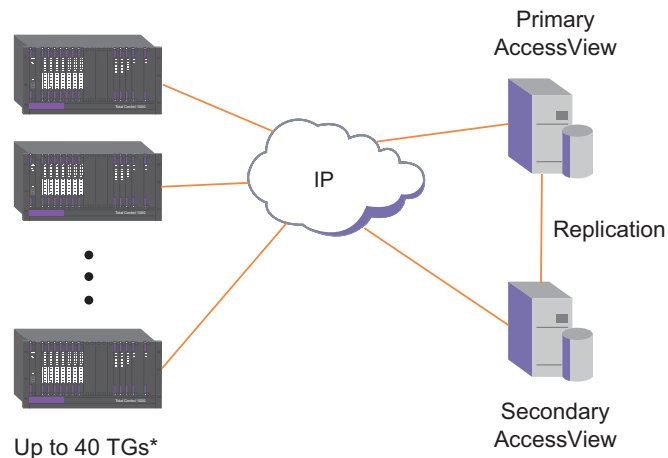
AccessView

A HIGH PERFORMANCE DATABASE SERVER FOR RECORDING, MONITORING & BILLING OF SHORT DURATION TRANSACTIONS

KEY BENEFITS

- **TRANSACTION ACCOUNTING**
- **CUSTOMER BILLING**
- **TRANSACTIONS MONITORING**
- **REPORTS GENERATION**
- **REDUNDANCY OPTIONS**
- **DATA REPLICATION**
- **REAL TIME TRAFFIC PATTERN REPORTING**

AccessView is an integral part of next generation transaction-processing gateway based on UTStarcom's Total Control® 1000 chassis. AccessView captures accounting and network statistics from the Transaction Gateway (TG), and then processes and stores them in the database. The data captured by the accounting server can be used for customer charging and billing, transaction recording, reports generation, network performance monitoring, and system modeling and measurements.



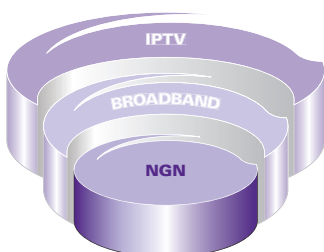
On a per-customer basis, transaction statistics not only supply the critical data for charging and billing, but provide information on usage patterns, as well. On a per-transaction basis, transaction statistics provide a fine granularity for tracking performance statistics, and can help pinpoint errant behavior of the system or an end user.

Real-Time Viewing of Data

Real-time data are recorded to AccessView at the end of each call. Customers can monitor and build a custom summary table using the most recent data on real-time. On a system-wide basis, transaction statistics can be used for traffic analysis according to the time of day, system components, offered load, and transaction routes.

Customer Interface Options

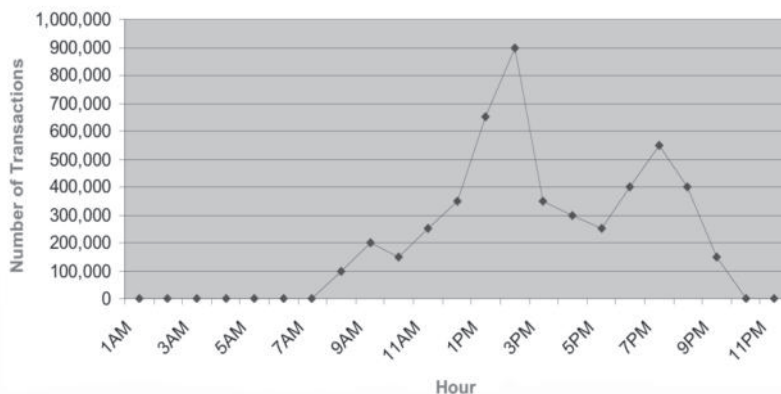
Easy-to-use customer interface options allow customers to retrieve, modify, and remove records from the server for performance monitoring, billing, day to day maintenance and long term backup.



Real-Time Reports

AccessView provides the convenience to generate various reports for planning and monitoring purposes.

24 Hour Transactions



Redundancy

AccessView can provide as an option fully redundant designs with active-standby configuration and data replication between the active and standby to allow the highest availability even if one network's service is interrupted.

TRANSACTION STATISTICS FIELDS

- System Name
- Modem Number
- Date
- Time
- DNI
- ANI
- DNIS Object
- Protocol Stack
- Host Address
- Disconnect Reason
- Connect Speed
- Training Time
- Total Connect Time
- Total Bytes to the Modem
- Total Bytes from the Modem
- Total Bytes to the Host
- Total Bytes from the Host
- Host Response Time
- Duplicate Transactions
- Retransmissions to POS
- Retransmissions to Host
- First X Bytes of Transaction Data

FEATURES AND FUNCTIONS*

- Adjustable accounting/network statistics storage structure
- Statistics storage and forwarding
- Command Line Interface
- User friendly Installation
- Redundancy and database replication
- Software upgrades

* Changes with configuration

Please note the information contained herein is for informational purposes only. Technical claims listed depend on a series of technical assumptions. Your experience with these products may differ if you operate the products in an environment, which is different from the technical assumptions. UTStarcom reserves the right to modify these specifications without prior notice. UTStarcom makes no warranties, express or implied, on the information contained in this document.

UTStarcom, Inc. USA
 1275 Harbor Bay Parkway
 Alameda, CA 94502 USA
 Tel: 510-864-8800
 Fax: 510-864-8802

www.utstar.com

About UTStarcom, Inc.

UTStarcom is a global leader in IP-based, end-to-end networking solutions and international service and support. The company sells its broadband, wireless, and handset solutions to operators in both emerging and established telecommunications markets around the world. UTStarcom enables its customers to rapidly deploy revenue-generating access services using their existing infrastructure, while providing a migration path to cost-efficient, end-to-end IP networks. Founded in 1991 and headquartered in Alameda, California, the company has research and design operations in the United States, China, Korea and India. UTStarcom is a FORTUNE 1000 company. For more information about UTStarcom, visit the company's Web site at www.utstar.com

Copyright © 2008 UTStarcom, Inc. All Rights Reserved. UTStarcom, the UTStarcom logo and Total Control are registered trademarks, and A World of Better Communication is a trademark of UTStarcom, Inc. and its subsidiaries. All other trademarks are the property of their respective owners.

- Support for 40 Transaction Gateway Router Cards simultaneously
- Log messages in File/Console/System logs
- Backup of accounting and network statistics
- Report generation

HARDWARE

- Sun Fire 245
- 4G RAM
- 292G Hard disk
- 10/100M Ethernet

DATABASE

- Oracle 9i

REDUNDANCY

- Volume Replication
- Active Standby mode

JOB SCHEDULING

- Exporting of accounting and network statistics to flat files
- Storage of accounting and network statistics, both locally and on a remote database
- Deleting accounting and network statistics

CAPACITY*

- Up to 40 Transaction Gateway Router Cards *
- Up to 3,000 transactions/sec *
- Supports Small, medium & Large configuration

CONFIGURATION

System	Trans/Sec	Max GW (Router Cards)	Max Storage (Records)
Access View-Basic 1000	1,000	13	50 million
Access View-Enhanced 2000	2,000	26	100 million
Access View-Premium 3000	3,000	40	250 million